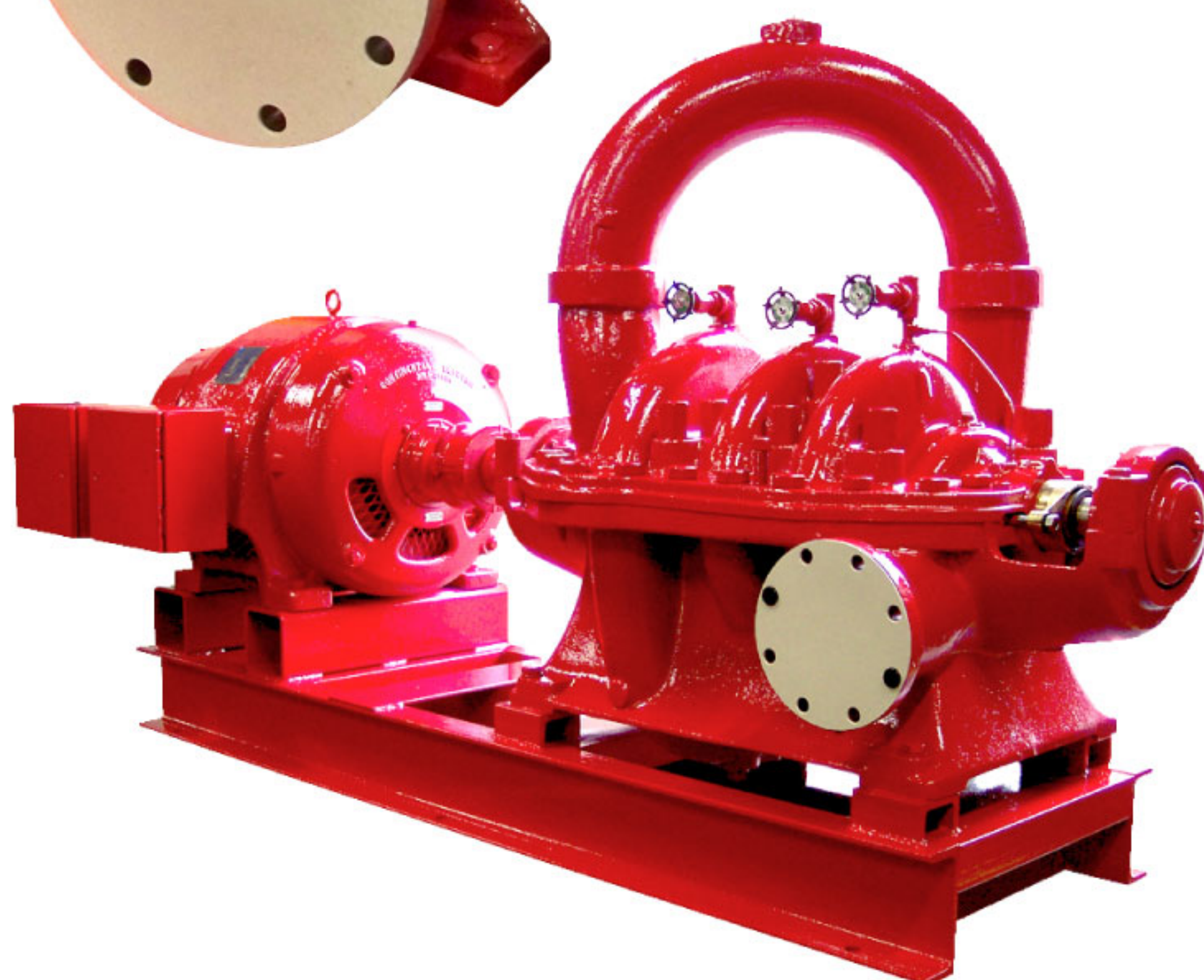
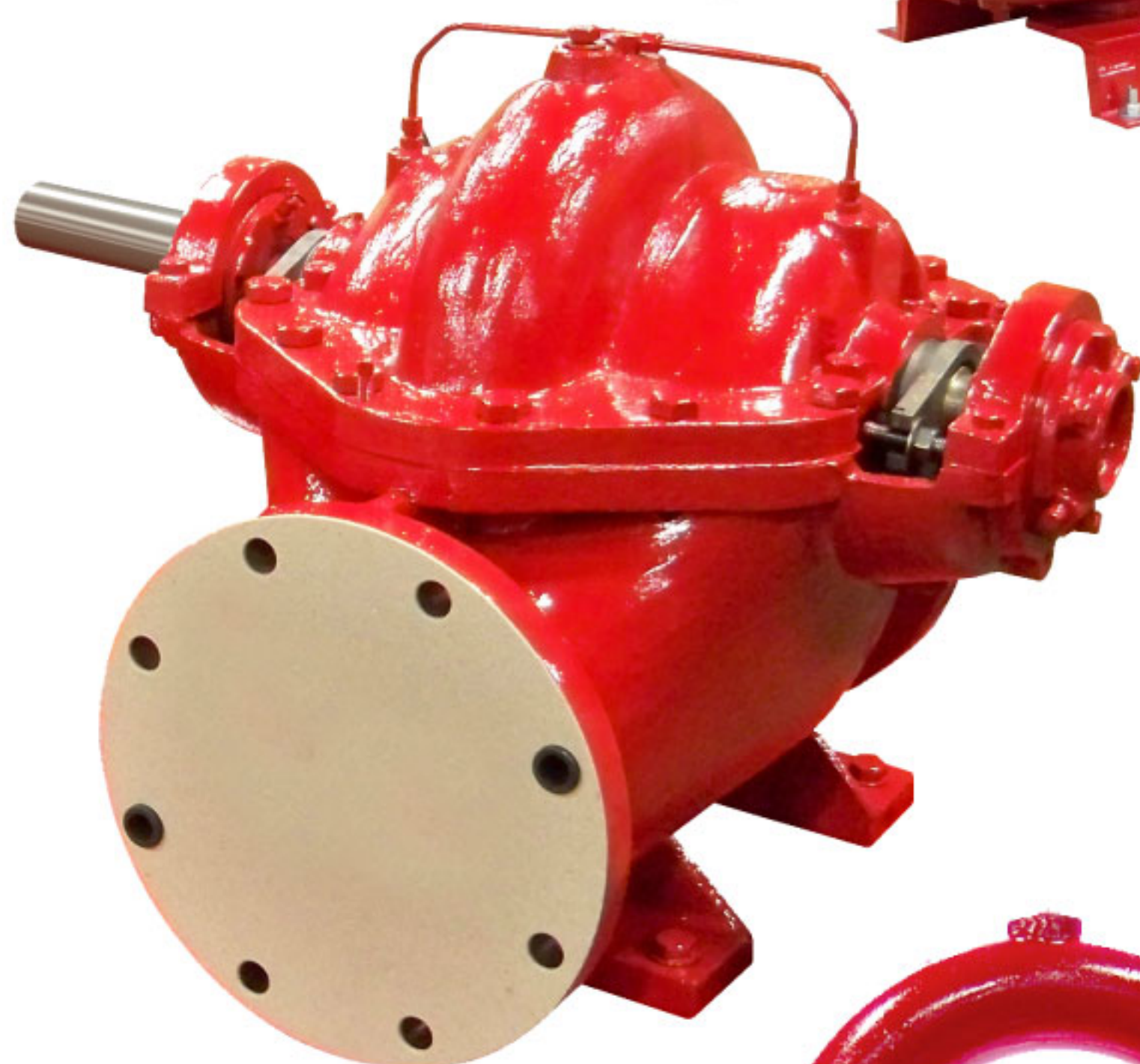
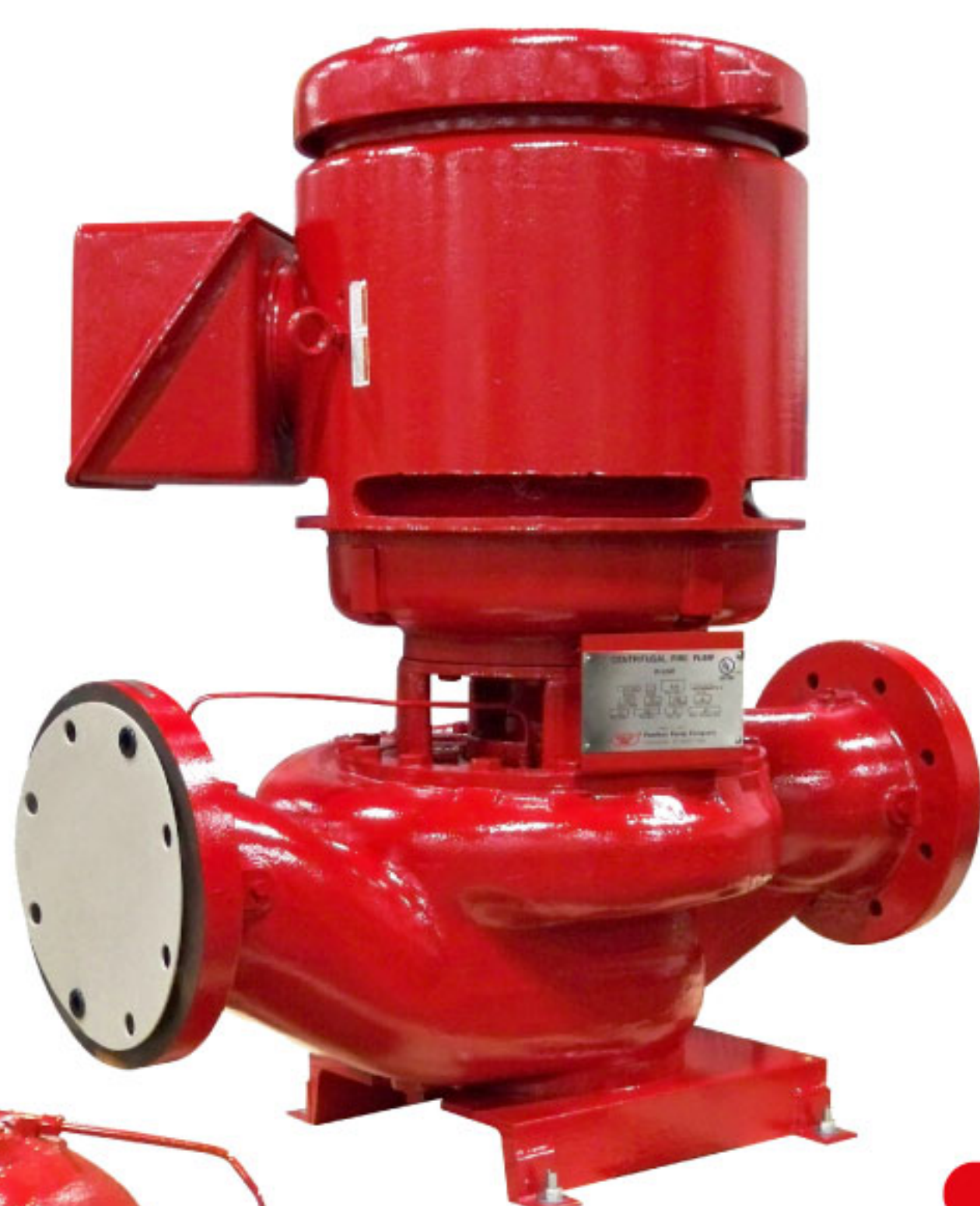


# COMPLETE SOLUTION FOR FIRE PROTECTION

Electric Motor Driven And Cummins Engine  
Driven Fire Pump Systems



**electrify**  
MALDIVES



# FIRE PRODUCT LINE TECHNICAL DATA



Horizontal Split Case  
Fire Pumps Single Stage



Horizontal Split Case  
Fire Pumps Multi Stage



Vertical In-Line  
Fire Pumps



Vertical Turbine  
Fire Pumps

|                           |                                                                                                                                                                    |  |                                                                                                                                                                    |  |
|---------------------------|--------------------------------------------------------------------------------------------------------------------------------------------------------------------|--|--------------------------------------------------------------------------------------------------------------------------------------------------------------------|--|
| Type                      | Horizontal centrifugal pumps with appropriate fittings for providing water supply to fire protection systems in buildings, plants and other onshore installations. |  | Horizontal centrifugal pumps with appropriate fittings for providing water supply to fire protection systems in buildings, plants and other onshore installations. |  |
| Model                     | AEF                                                                                                                                                                |  | TUF & TUTF                                                                                                                                                         |  |
| Capacities                | 250-5000 gpm (57-1136 m <sup>3</sup> /hr)                                                                                                                          |  | 50-1500 gpm (11-340 m <sup>3</sup> /hr)                                                                                                                            |  |
| Head                      | 92-664 ft. (28-208 m)                                                                                                                                              |  | 230-1530 ft. (70-454 m)                                                                                                                                            |  |
| Pressure                  | 40-288 psi (2.75-19.8 bar)                                                                                                                                         |  | 100-646 psi (6.8-44.5 bar)                                                                                                                                         |  |
| Horsepower                | Up to 1000 hp (745 kW)                                                                                                                                             |  | Up to 500 hp (372 kW)                                                                                                                                              |  |
| Drives                    | Horizontal electric motors, diesel engines, and steam turbines.                                                                                                    |  | Horizontal electric motors, diesel engines, and steam turbines.                                                                                                    |  |
| Temperature               | Ambient within the limits for satisfactory equipment operation.                                                                                                    |  | Ambient within the limits for satisfactory equipment operation.                                                                                                    |  |
| Materials of Construction | Cast iron, bronze fitted as standard. Optional materials available for sea water applications.                                                                     |  | Cast iron, bronze fitted as standard. Optional materials available for seawater applications.                                                                      |  |
|                           |                                                                                                                                                                    |  | Cast iron, bronze fitted.                                                                                                                                          |  |
|                           |                                                                                                                                                                    |  | Cast iron, bronze fitted as standard. Optional materials available for sea water applications.                                                                     |  |



Superior fire protection to facilities & field-tested products are designed for reliability and longevity and include a broad selection of pumps, drives, controls, baseplate and accessories.

- Proven pumping systems meet changing and demanding conditions.
- Pumps are available with superior lead times, specifically AEF and PVF models (4–6 weeks).
- Market-leading hydraulic efficiencies; our fire pumps have a lower horsepower than the marketplace average.
- Custom engineered designs allow for thousands of installations of all sizes and types.
- Mechanical-run test capabilities and enclosures are available.
- Drives are available in electric motor or diesel engine.
- Solution options include basic units, packaged systems, and engineered enclosures to suit each application and need.

## **Electrify Maldives (Pvt) Ltd**

Unit 5, 5th Floor, Leo Building, LOT Number 10693 (M3-60) Hulhumale, Maldives.

**Contact No: +94 77 935 9972**

**info@electrifymv.com | www.electrifymv.com**